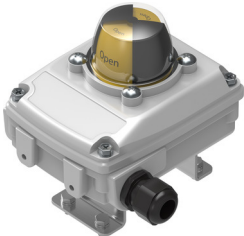


Sensor box SRBC-CA3-YR90-MW-22A-1W-C2P20

Part number: 3482805

FESTO



Data sheet

Feature	Value
Type code	SRBC
Certification	c CSA us (OL)
CE marking (see declaration of conformity)	As per EU low voltage directive As per EU RoHS directive
KC characters	KC EMC
Note on materials	RoHS-compliant
Safety integrity level (SIL)	SIL 2
Measuring principle	Mechanical/electrical
Ambient temperature	-20 °C ... 80 °C
Switching output	Contact-based
Switching element function	Toggle switch, single-pin
Max. output current AC	3000 mA
Max. output current DC	3000 mA
Operating voltage range AC	0 V ... 250 V
DC operating voltage range	0 V ... 30 V
Electrical connection	Screw terminal
Closable nominal conductor cross-section	0.25 mm ² ... 2.5 mm ²
Cable fitting	M20x1.5
Approved cable diameter	5 mm ... 13 mm
Type of mounting	On flange as per ISO 5211 With mounting bracket
Connection for valve positioner and position sensor conforms to standard	VDI/VDE 3845 size AA 1
Mounting position	Any
Product weight	800 g
Housing colour	Gray
Housing material	Die-cast aluminum
Seals material	NBR
Shaft material	High-alloy stainless steel
Material of screws	High-alloy stainless steel
Blanking plug material	PA
Material of mounting bracket	High-alloy stainless steel
Pointer material	PC
Material for cable connector	PA
Circlip material	High-alloy stainless steel
Disc material	High-alloy stainless steel

Feature	Value
Cover cap material	PC
Position indicator	Yellow/red
Angle detection setting range	0 deg ... 90 deg
Storage temperature	-20 °C ... 50 °C
Degree of protection	IP67 NEMA 4/4X
Shock resistance	Shock test with severity level 2 as per FN 942017-5 and EN 60068-2-27
Vibration resistance	Transport application test with severity level 2 as per FN 942017-4 and EN 60068-2-6
LABS conformity	VDMA24364 zone III
Contamination level	3